



Sunset Ridge 521



Sunset Ridge 521 Model number: K521
3 beds • 2 baths • 1568 sq.ft. • 28' width • 56' depth

Our home building facilities invest in continuous product and process improvements. Plans, dimensions, features, materials, specifications and availability are subject to change without notice or obligation. Renderings and floor plans are representative likenesses of our homes and may differ from the actual homes. We invite you to tour a Home Center near you and inspect the highest value in quality housing available or call (518) 885-8050 to speak with a Home Consultant. Copyright 2017, CMH. All rights reserved.

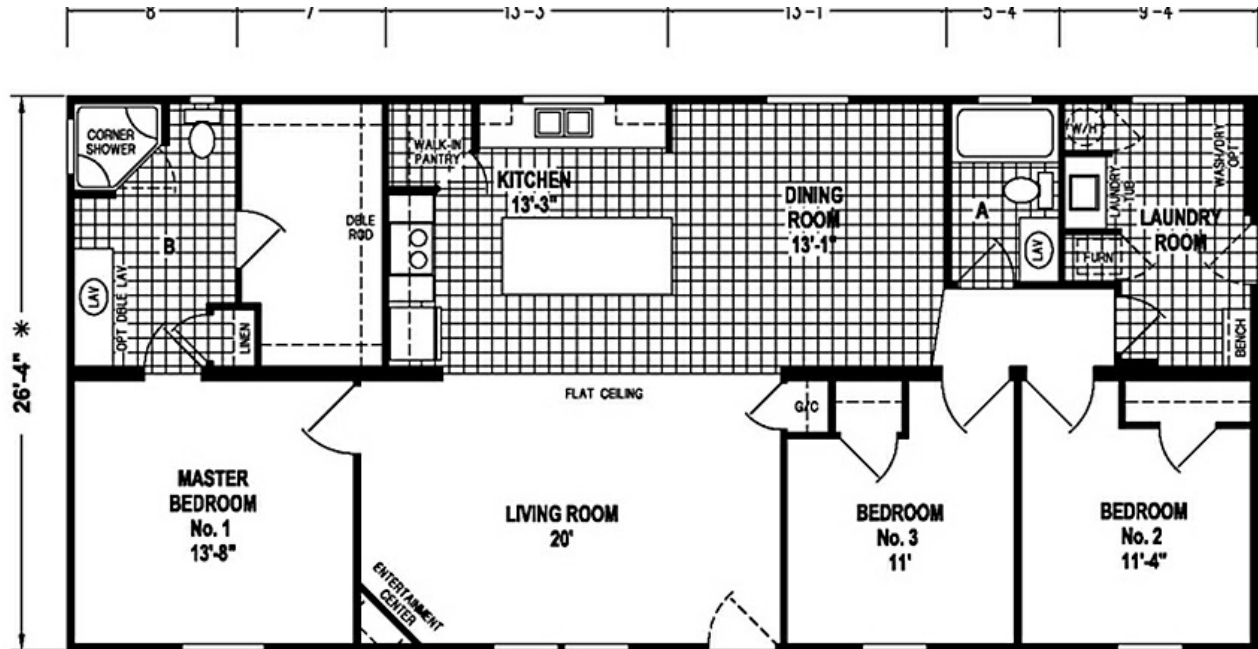
<http://www.gihomesballstonspa.com>

**G & I HOMES-BALLSTON
SPA**

**2138 DOUBLEDAY AVENUE
BALLSTON SPA, NY 12020**

Monday - Thursday: 9am - 7pm
Friday: 9am - 6pm
Saturday: 9am - 5pm
Sunday: Closed

(518) 885-8050



K521/5628 (1,474 SQ. FT.) 3BEDROOM - 2BATHS

Sunset Ridge 521 Model number: K521

3 beds • 2 baths • 1568 sq.ft. • 28' width • 56' depth

Our home building facilities invest in continuous product and process improvements. Plans, dimensions, features, materials, specifications and availability are subject to change without notice or obligation. Renderings and floor plans are representative likenesses of our homes and may differ from the actual homes. We invite you to tour a Home Center near you and inspect the highest value in quality housing available or call (518) 885-8050 to speak with a Home Consultant. Copyright 2017, CMH. All rights reserved.

<http://www.gihomesballstonspa.com>

**G & I HOMES-BALLSTON
SPA**

**2138 DOUBLEDAY AVENUE
BALLSTON SPA, NY 12020**

Monday - Thursday: 9am - 7pm
 Friday: 9am - 6pm
 Saturday: 9am - 5pm
 Sunday: Closed

(518) 885-8050